

# EARLY HELP TRAINING OFFER

Access FREE training available for all organisations in Birmingham working with children, young people and families

*Early help is everyone's responsibility; we want children, families, communities and agencies to work together so that families are assisted to help themselves and are supported as soon as a need arises, thereby improving the overall wellbeing and quality of life of all children, young people and their families.*



PERRY BARR LOCALITY  
EARLY HELP  
COMMUNITY CONNECTORS SERVICE



COMMUNITY CONNECTORS SERVICE PROVIDED BY HANDSWORTH ASSOCIATION OF SCHOOLS AND SPURGEONS

AREAS COVERED - ASTON, BIRCHFIELD, HANDSWORTH, HANDSWORTH WOOD, HOLYHEAD, KINGSTANDING, LOZELLS, OSCOTT AND PERRY BARR

OVERSEEN AND SPONSORED BY BIRMINGHAM CHILDREN'S PARTNERSHIP

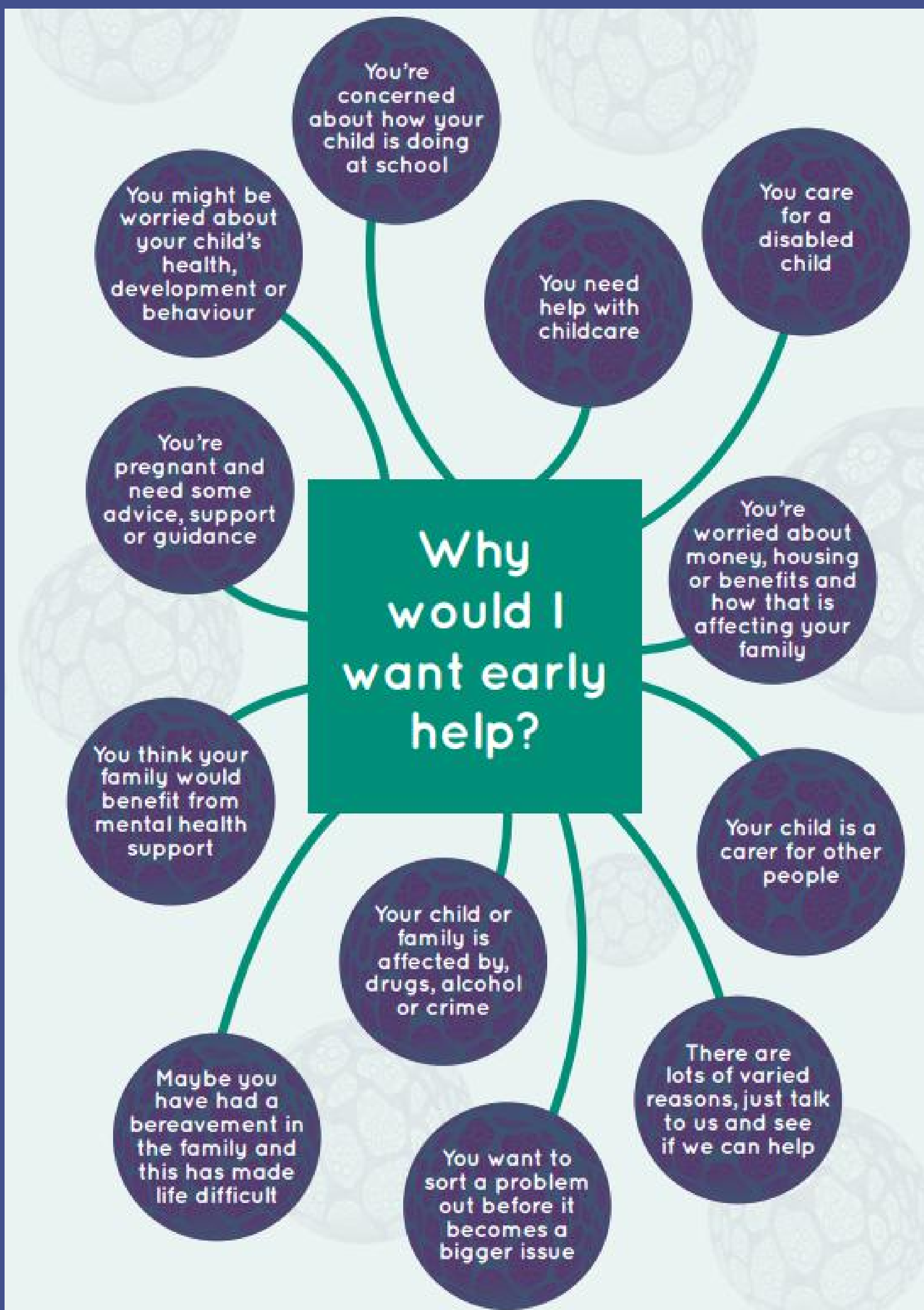
Birmingham  
Children's Partnership



# Why Early Help?

The Birmingham wide Early Help offer managed by Birmingham Childrens Partnership provides organisations with additional support to help families. Effective early help relies upon families, communities and local agencies working together to:

- Identify children, young people and families who would benefit from early help;
- Undertake an assessment of the need for early help;
- Provide targeted early help services to address the assessed needs of a child, young person and their family which focuses on activity to significantly improve the outcomes for them.
- Early help should happen as soon as possible when difficulties emerge in order to prevent problems from becoming entrenched or escalated.
- Early help is underpinned by universal services to identify the need for support at an early stage for those families who may need it.
- An effective early help offer is the responsibility of all partners.
- All families will have access to co-ordinated early help in accordance with need as soon as difficulties are identified. This support should be personalised, multi-agency, evidence based and embedded within a whole family approach. Children and young people in those families will be supported to live safe, healthy and fulfilling lives, and to develop into responsible adult citizens.
- Early help can break the intergenerational cycle of risk and vulnerability that some families become entrenched in.
- Families will become more resilient and develop capabilities to prevent and resolve problems themselves.
- Local communities will become resilient through early help.



Our package of training offers a variety of ways professionals can access additional information about the process of an Early Help Assessment

# PERRY BARR LOCALITY EARLY HELP

Supported by Spurgeons Children's Charity and Handsworth Association of schools

## COMMUNITY

## CONNECTORS

THE PERRY BARR LOCALITY COMMUNITY CONNECTOR TEAM ARE YOUR FIRST POINT OF CONTACT IF YOU NEED SUPPORT WITH ACCESSING EARLY HELP FOR FAMILIES IN ANY WAY.

We organise Early Help Training and help connecting schools and other statutory services with community and voluntary organisations. Early help is a new birmingham wide service providing support to ensure families, children and young people get the EARLY help that they need. As well as building a directory of services, connecting professionals to each other, and increasing awareness of what support is out there for the families - the Community Connectors are also looking to identify gaps in community provision.

The Early Help directory will become publicly available to all community and public sector services. The service involves building integrated networks and trusted working relationships for Children, Young people, Families, Voluntary and Statutory Organisations, Schools and training providers, Health Providers, Business and community stakeholders within the Locality Partnership as key elements of our innovative Early Help Programme.

## WORKING TOGETHER FOR

CHILDREN  
AND  
YOUNG  
PEOPLE

FAMILIES  
IN EARLY  
NEED

COMMUNITY  
STRENGTH

# PERRY BARR LOCALITY EARLY HELP TRAINING PACKAGE

- 1 HOUR INFO SESSIONS DELIVERED BY ONE OF OUR COMMUNITY CONNECTOR TEAM EITHER ON SITE OR LIVE ONLINE. THIS SESSION GIVES PROFESSIONALS A BRIEF OVERVIEW OF THE PROCESS, WHY ACCESS EARLY HELP AND WHAT HAPPENS AFTER AN INITIAL REFERRAL WHEN USING A FAMILY CONNECT FORM.
- A 30 MINUTE SESSION DESIGNED TO PASS ON ALL THE RELEVANT INFO NEEDED TO COMPLETE A FAMILY CONNECT FORM FOR A FAMILY. FLEXIBLE DELIVERY DESIGNED TO FIT AROUND YOUR SETTINGS (IN TEAM MEETINGS, AFTER SCHOOL, DURING STAFF TRAINING) OR STAFF CAN HAVE ACCESS TO AN ONLINE WEBINAR THAT CAN BE ACCESSED AT ANYTIME.
- 2 HOUR STAFF TRAINING IN EARLY HELP DELIVERED BY AN EARLY HELP COORDINATOR - PERRY BARR LOCALITY. THIS SESSION COVERS EVERYTHING PROFESSIONALS NEED TO KNOW ABOUT THE EARLY HELP PROCESS, WHY IT IS IMPORTANT, HOW IT FITS INTO WIDER NETWORKS AND HOW TO ACCESS FURTHER SUPPORT.

WE ALSO HAVE A CHANGING RANGE OF WORKSHOPS AND TRAINING THROUGHOUT THE YEAR WHICH AIM TO HELP PROFESSIONALS SUPPORT THE CHILDREN, YOUNG PEOPLE AND FAMILIES THAT THEY WORK WITH.

[HTTP://HANDSWORTHSCHOOLS.EVENTBRITE.CO.UK?S=146374309](http://HANDSWORTHSCHOOLS.EVENTBRITE.CO.UK?S=146374309)

## CONTACT US TO FIND OUT MORE



### PERRY BARR DISTRICT COMMUNITY CONNECTORS TEAM:-

DEBORAH BONNIQUE  
COMMUNITY CONNECTOR - PERRY BARR LOCALITY  
EDUCATION AND ENGAGEMENT MANAGER  
HANDSWORTH ASSOCIATION OF SCHOOLS  
07951 091415  
D.BONNIQUE@HANDSWORTH.BHAM.ORG.UK  
TWITTER : @HANDSWORTHSCHS

OR RUTH EDGCUMBE  
COMMUNITY CONNECTOR - PERRY BARR LOCALITY  
07821513257  
R.EDGCUMBE@HANDSWORTH.BHAM.ORG.UK

OR SHARON CLARKE  
COMMUNITY CONNECTOR - PERRY BARR LOCALITY  
EARLY HELP & ENGAGEMENT WORKER  
BIRMINGHAM FORWARDS STEPS CHILDREN'S  
CENTRES - PERRY BARR DISTRICT  
T: 0121 752 1900  
M: 07974255900  
E: SHARON.PB@SPURGEONS.ORG

PERRYBARREHNETWORK@SPURGEONS.ORG  
WWW.SPURGEONS.ORG/BIRMINGHAM

OVERSEEN AND SPONSORED BY  
BIRMINGHAM CHILDREN'S  
PARTNERSHIP